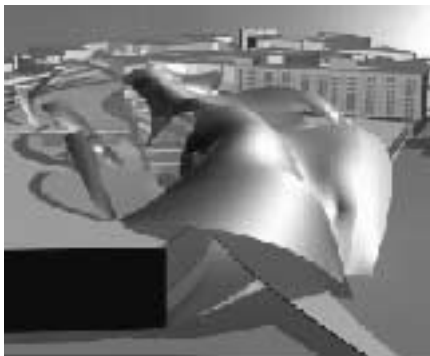
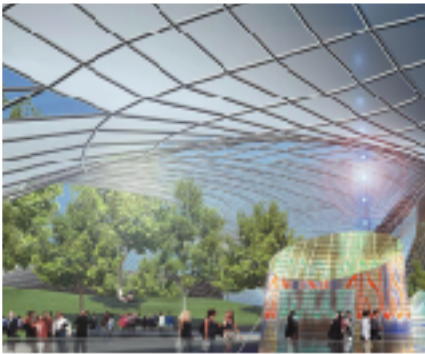


CHAVASSE PARK

Liverpool, England

PHILIP JOHNSON • ALAN RITCHIE
A R C H I T E C T S



The idea of urban intervention has been a central part of several recent designs by Philip Johnson/Alan Ritchie Architects. In these they have explored how to place large-scale structures within existing urban fabric to create extraordinary architectural effects. Their design for Chavasse Park in Liverpool, England is a clear example of this urban intervention, which at once stands out as a civic monument, yet acts to unite various elements of the city to form a recognizable urban district. Its distinctly warped form is very much due to the firm's collaboration with engineer, Cecil Balmond of Ove Arup Partners. When asked about the use of glass to enclose the two-story shopping mall, Johnson explains, "This is reminiscent of traditional shopping arcades such as London's famous Burlington arcade and similar arcades found in France and Germany." Philip Johnson/Alan Ritchie Architects is concerned greatly with what will make this project so special to the city of Liverpool. Johnson asserts, "It will offer retail and entertainment activities and all that, but more important it will provide pedestrian access to and from Liverpool's Old dock, the city's salient feature. The design emanates directly from the need to reintegrate the waterfront into the city. "



Client: The Walton Group plc
Completion Date: 2008 (est.)
Associate Architects: Studio BAAD