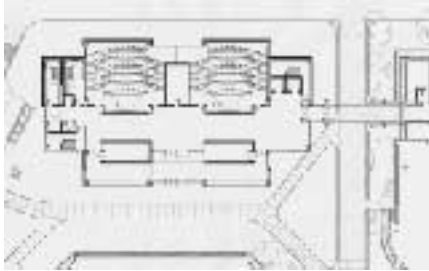


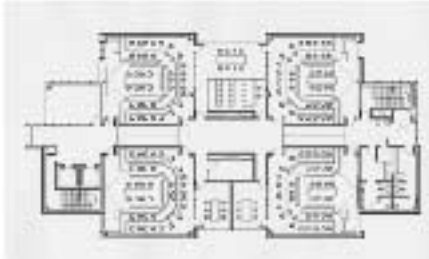
DREXEL UNIVERSITY

Bennett S. LeBow College of Business
Philadelphia, Pennsylvania

PHILIP JOHNSON • ALAN RITCHIE
A R C H I T E C T S



When Drexel University elected to build a truly modern facility for the Bennett S. LeBow College of Business it turned to Philip Johnson/Alan Ritchie Architects to create a 40,000 sq. ft. building that could combine state-of-the-art technical capabilities with architecture appropriate to the tradition of the Drexel campus. The Peck Alumni Center, a landmark designed by Frank Furness is located just one block west on Market Street. Its red brick serves as inspiration for the Philip Johnson/Alan Ritchie design.



While the Bennett S. LeBow College of Business will respect its historic neighbor, it is unquestionably a building of the 21st century. The architects have incorporated a variety of elements that enhance the use of advanced audiovisual equipment. For example, the massing of the building limits light into those classrooms designated for electronic conferencing and other presentation techniques.



The top floor is reserved for the executive program and is intended both to foster learning and impart a truly professional atmosphere to the Business School. The plan includes two boardroom style classrooms connected by a large space well-suited for receptions, dinners and other uses. The fourth floor location provides expansive views of the campus and West Philadelphia.

The building's exterior is accented by round aluminum column covers that are painted the official "Drexel Blue" -- a color widely used on campus. The transparent curtain wall creates the principal façade of the building.



Client: Drexel University, Warren Woldore

Completion Date: 2002

Area: 40,000 square feet

Associate Architects: Burt Hill Kogar
Rittelman Associates