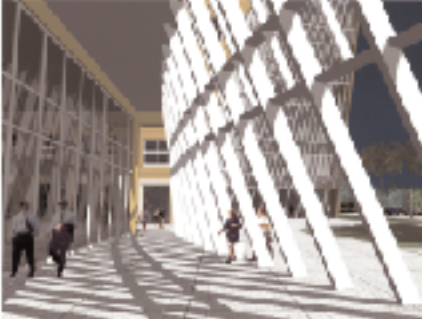


# FIRST UNION PLAZA

Boca Raton, Florida

**PHILIP JOHNSON • ALAN RITCHIE**  
A R C H I T E C T S



Located in the center of the Boca Raton business district, this 4.1 acre master plan for a mixed-use development uses materials and colors reminiscent of Mediterranean building design. Consisting of both commercial and residential components, the project is united by a lively play of complementary colors and textures of stucco. The custom hues, selected by Philip Johnson, give homage to the tradition of 1920s Florida architect Addison Mizner, while providing a contemporary vision appropriate for the 21st century.

On the commercial end of the project, there are two main office buildings which include a seven story office tower of 90,000 square feet, a two story bank building of 14,500 square feet, a parking garage for approximately 350 cars and a connecting arcade that links the garage with the office building. In addition, there is a landscaped courtyard at the ground level that separates the garage from the office buildings. The central design concept here revolves around the creation of a distinctively landscaped pedestrian space that sits at the corner of Federal and Camino. now known as 'First Union Plaza'.

The design of the buildings is the result of a reexamination of traditional geometry - here the cube - and skillfully removing a curved section of that cube to make a dramatic and novel form.

The residential portion of the project, designed by the firm of Looney Ricks Kiss, consists of a 200-unit, mid-rise luxury building that is set adjacent to the garage. The apartment complex is designed around two interior courtyards, containing pools and fountains.



Client: Sony Partners Limited

Completion Date: 2000

Area: 150,000 square feet

Associate Architects: Retzsch Lanao  
Caycedo Architects