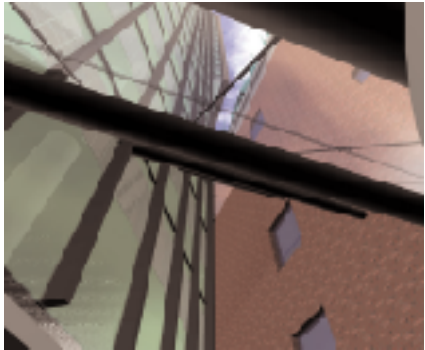
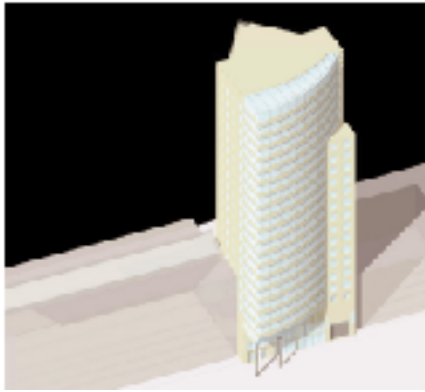


BOOMPJES TOWER

Rotterdam, Netherlands

PHILIP JOHNSON • ALAN RITCHIE
A R C H I T E C T S



This office tower occupies a narrow site between the Rhine and one of Rotterdam's many canals. While the building takes its design cues from local buildings and conditions, the principle gesture is the rotation of the body of the tower to allow optimum river views and sunlight in the office spaces. The rotation also serves to set forth the historic landmark building adjacent to the new tower.



Area: 18,000 square meters
Completion Date: 2003
Associate Architects: Brouwer Steketee
Architecten