

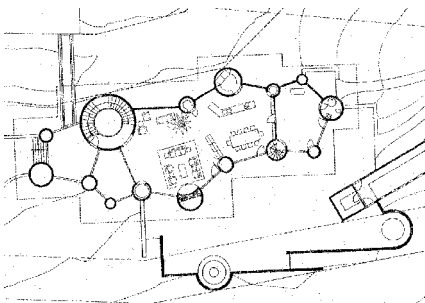
BUCK HOUSE

Telluride, Colorado

PHILIP JOHNSON • ALAN RITCHIE
A R C H I T E C T S

This house designed for the hills of Colorado is comprised of three main components: The lap-pool house, the main house, and the fully-serviced master suite which can serve as a guest house, and which is reached by crossing a footbridge over the creek that divides the site. The main house is composed of a series of cylinders of varying sizes, the largest of which contains an internal stair. The other cylinders serve as chimneys and storage closets. The cylinders are tied together by the straight exterior walls, which abut the cylinders at different angles. The windows at the upper level of the main house are round and irregular, expressing the plan of the cylindrical walls.

The living areas of the main house face views to the south, as do the Jacuzzi and barbecue pit which are carved out of the hill. Bedrooms face the creek.



Area: 6,500 sq. ft.